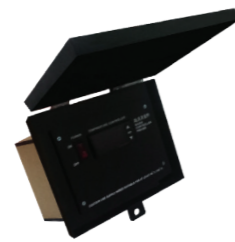




SAUNA STOVE MSS-Series

Comes with a Minimalist Design

Double panel body that acts as the heat protector (jacket) of the stove, keeping the outside cool to prevent sauna wood from getting burned.



DIGITAL CONTROL PANEL

- Easy to use
- Heavy Duty
- Integrated Switch
- Timing & Temperature Control

Feature :



Separated Terminal Heater



Smaller & Slimmer Digital



Adjustable Analog Thermostat



Iron Box

Specification Product :

TYPE	Watts KW	MINIMUM ROOM			MAXIMUM ROOM			Phase	VAC	AMPS	WIRE SIZE
		Floor M2	Ceiling Height	Volume M3	Ceiling Height	Volume M3					
MSP 30	3	1.5	1.9	2	2.4	4	3	220	13.0	4 x 2.5 mm ²	
MSP 45	4.5	3	1.9	3	2.4	6	3	220	19.6	4 x 2.5 mm ²	
MSP 60	6	4	1.9	5	2.4	9	3	220	26.1	4 x 4 mm ²	
MSP 75	7.5	4.5	1.9	8	2.4	11	3	220	32.6	4 x 4 mm ²	
MSP 90	9	5	1.9	10	2.4	13.5	3	220	39.1	4 x 4 mm ²	
MSP 120	12	5.5	1.9	12	2.4	18	3	220	52.1	4 x 4 mm ²	
MSP 150	15	6.5	1.9	15	2.4	22.5	3	220	65.2	4 x 4 mm ²	
MSP 180	18	9	1.9	19	2.4	27	3	220	78.3	4 x 6 mm ²	
MSP 240	24	12	1.9	25	2.4	36	3	220	104.3	4 x 10 mm ²	



COVERING THE SAUNA HEATER CAUSES A FIRE RISK AN INADEQUATELY FILED ROCK CONTAINER CAUSES A FIRE RISK ONLY USE A LADLE TO SPLASH WATER OVER THE VOLCANIC ROCKS OBSERVING MINIMUM DISTANCES IS REQUIRED TO REDUCE FIRE HAZARD



SAUNA STOVE

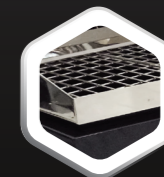
Heat Radiation
for an International-Class
Sauna Experience



Feature :



Separated Terminal Heater



Stainless Steel



Adjustable Analog Thermostat



New!

TOUCH SCREEN DIGITAL CONTROL PANEL

- Easy to use
- Heavy Duty
- Wi-Fi Integrated
- Precise Timing & Temperature Control

PT.PERSADA CAHAYA MULIA INDONESIA

Greenwich Business Park E17, BSD City, Tangerang

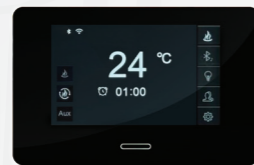
Jl. Gatot Subroto Barat No. 451, Padangsambian, Denpasar - Bali



SAUNA STOVE MSP-Series

Solid and Wider Design

Double panel body that acts as the heat protector (jacket) of the stove, so the outside stays cool to prevent sauna wood from getting burned.



New!
**TOUCH SCREEN
DIGITAL CONTROL PANEL**

- Easy to use
- Heavy Duty
- Wi-Fi Integrated
- Precise Timing & Temperature Control

New Feature :



Separate Terminal Heater



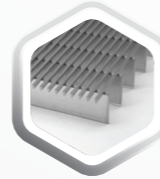
Stainless Steel Top Cover



Adjustable Analog Thermostat



Smaller & Slimmer Digital Panel



Stainless Steel

Specification Product :

TYPE	MINIMUM ROOM				MAXIMUM ROOM		Phase	VAC	AMPS	WIRE SIZE
	Watts KW	Floor M2	Ceiling Height	Volume M3	Ceiling Height	Volume M3				
MSP 30	3	1.5	1.9	2	2.4	4	3	220	13.0	4 x 2.5 mm ²
MSP 45	4.5	3	1.9	3	2.4	6	3	220	19.6	4 x 2.5 mm ²
MSP 60	6	4	1.9	5	2.4	9	3	220	26.1	4 x 4 mm ²
MSP 75	7.5	4.5	1.9	8	2.4	11	3	220	32.6	4 x 4 mm ²
MSP 90	9	5	1.9	10	2.4	13.5	3	220	39.1	4 x 4 mm ²
MSP 120	12	5.5	1.9	12	2.4	18	3	220	52.1	4 x 4 mm ²
MSP 150	15	6.5	1.9	15	2.4	22.5	3	220	65.2	4 x 4 mm ²
MSP 180	18	9	1.9	19	2.4	27	3	220	78.3	4 x 6 mm ²
MSP 240	24	12	1.9	25	2.4	36	3	220	104.3	4 x 10 mm ²



WARNING!

COVERING THE SAUNA HEATER CAUSES A FIRE RISK AN INADEQUATELY FILED ROCK CONTAINER CAUSES A FIRE RISK ONLY USE A LADLE TO SPLASH WATER OVER THE VOLCANIC ROCKS OBSERVING MINIMUM DISTANCES IS REQUIRED TO REDUCE FIRE HAZARD



SAUNA STOVE MSH-Series

Comes with a Minimalist Design

Double panel body that acts as the heat protector (jacket) of the stove, keeping the outside cool to prevent sauna wood from getting burned.



**DIGITAL
CONTROL PANEL**

- Easy to use
- Heavy Duty
- Integrated Switch
- Timing & Temperature Control

Feature :



Separated Terminal Heater



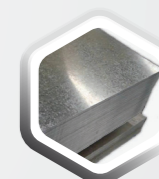
Stainless Steel Top Cover



Adjustable Analog Thermostat



Smaller & Slimmer Digital



Galvanized Steel Box

Specification Product :

TYPE	MINIMUM ROOM				MAXIMUM ROOM		Phase	VAC	AMPS	WIRE SIZE
	Watts KW	Floor M2	Ceiling Height	Volume M3	Ceiling Height	Volume M3				
MSH 30	3	1.5	1.9	2	2.4	4	3	220	13.0	4 x 2.5 mm ²
MSH 45	4.5	3	1.9	3	2.4	6	3	220	19.6	4 x 2.5 mm ²
MSH 60	6	4	1.9	5	2.4	9	3	220	26.1	4 x 4 mm ²
MSH 75	7.5	4.5	1.9	8	2.4	11	3	220	32.6	4 x 4 mm ²
MSH 90	9	5	1.9	10	2.4	13.5	3	220	39.1	4 x 4 mm ²
MSH 120	12	5.5	1.9	12	2.4	18	3	220	52.1	4 x 4 mm ²
MSH 150	15	6.5	1.9	15	2.4	22.5	3	220	65.2	4 x 4 mm ²
MSH 180	18	9	1.9	19	2.4	27	3	220	78.3	4 x 6 mm ²
MSH 240	24	12	1.9	25	2.4	36	3	220	104.3	4 x 10 mm ²



WARNING!

COVERING THE SAUNA HEATER CAUSES A FIRE RISK AN INADEQUATELY FILED ROCK CONTAINER CAUSES A FIRE RISK ONLY USE A LADLE TO SPLASH WATER OVER THE VOLCANIC ROCKS OBSERVING MINIMUM DISTANCES IS REQUIRED TO REDUCE FIRE HAZARD